

**AMPLIFYME**  
EXPERIENCE FINANCE

▷ Introduction  
Simulations

**Salisbury**  
UNIVERSITY



**Our simulations provide the global benchmark for training, development and assessment across roles in finance.**



### **Practical**

The simulations are designed to connect candidates to the reality of working in today's financial markets, providing real-world experience.



### **Accessible**

Extensive on-demand pre-learning is available for each simulation. No prior experience is needed and a participant can be progressed through sequentially more advanced experiences to help them get desk-ready.



### **Assessed**

Candidates develop role-specific skills in each simulation and receive feedback on their performance to help them learn and improve. The detailed metrics also provide excellent practical experiences to help candidates in their applications.



## OVERVIEW

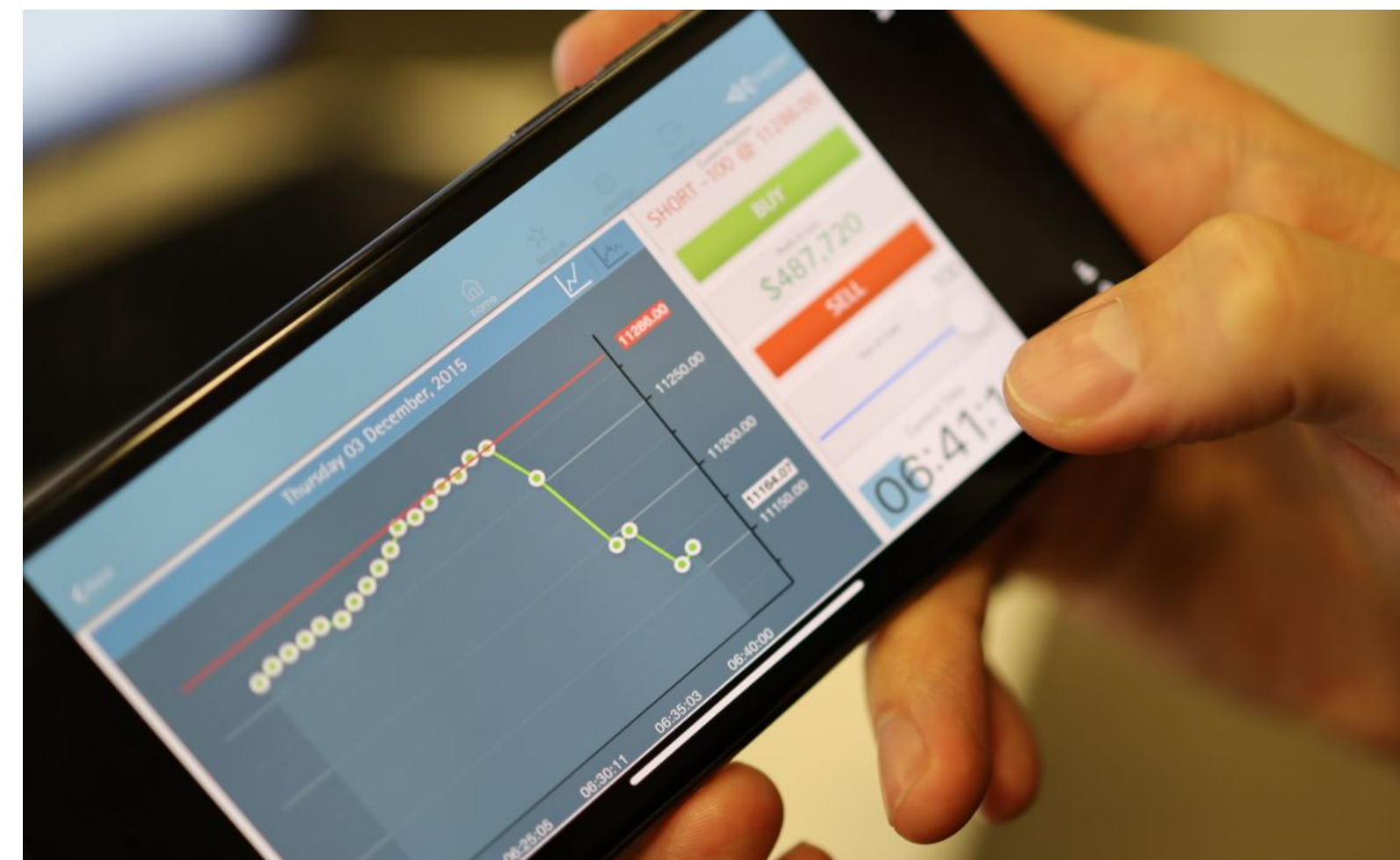
Our ReTrader application brings candidates up to speed with everything that matters for markets now. From inflation data to interest rate hikes, candidates re-trade major market events and learn about why the market was impacted in the way it was.

The introduction to the session covers a deep contemporary market review before candidates move to the simulation. They then put theory into practice on real price data and breaking news. This is a great session to help all candidates understand contemporary market drivers, their impact in the economy, and the potential challenges and opportunities they provide. The session time can be tailored to a large extent with each ReTrader game lasting roughly 5 minutes.

## EVENT PREVIEW AND REVIEWS



## LIVE PRICE AND NEWS DATA REPLAYED



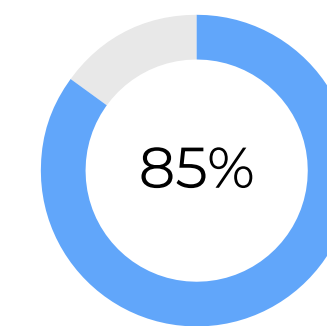
## OVERVIEW

Our introductory Sales & Trading simulation known as the 'Finance Accelerator' gives candidates an exciting, practical introduction to global markets. Candidates will learn the differences between the buy side and sell side as they rotate through the roles of Investment Bank and Asset Manager across two 30 minute rounds on the platform. With a short industry introduction and review this session can be delivered in a 90 minute timeframe.

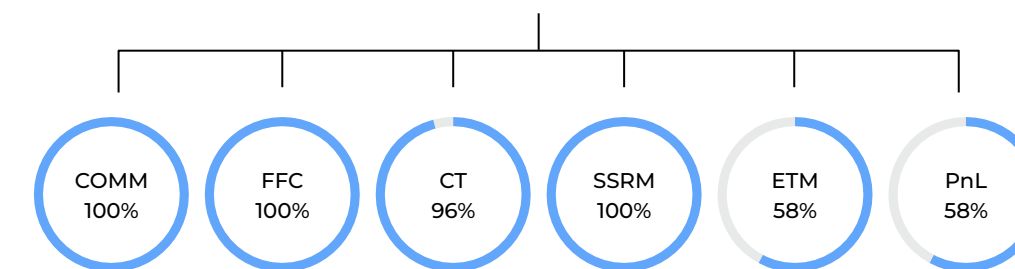


## ROLE PERFORMANCE METRICS

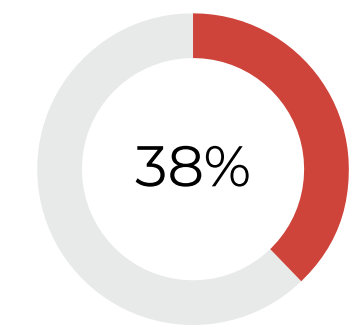
### Sell side



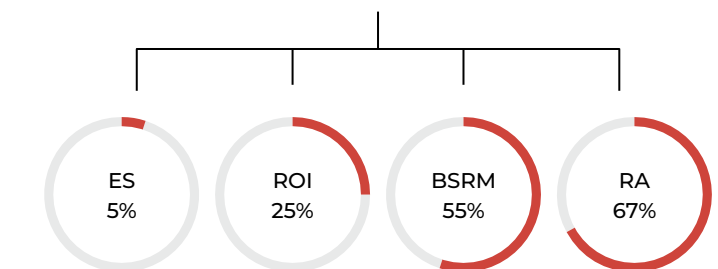
INVESTMENT BANK



### Buy side



ASSET MANAGER



### ASSET MANAGER (30 MINS)

Candidates will be managing a portfolio of assets with breaking news affecting prices. Their aim is to generate return on investment through reacting to the breaking news announcements and rebalancing their \$20m portfolio accordingly.

### INVESTMENT BANK (30 MINS)

As an Investment Bank candidates will facilitate client flow whilst also managing their risk. Candidates are rewarded for their ability to generate commission through the Asset Managers whilst unwinding risk effectively.

## OVERVIEW

Our M&A simulations provide hands-on, real world analyst experiences built with our institutional partner clients.

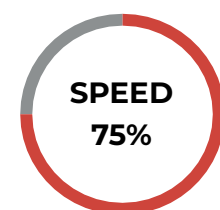
Our introduction to banking simulation puts candidates at the heart of a Mergers & Acquisitions (M&A) deal helping them to experience the valuation challenges of a financial model. All participants receive immediate and detailed feedback on their models with a marked template, giving guidance on their correct (green) and incorrect submissions (red).

## SESSION STRUCTURE (90 MINS)

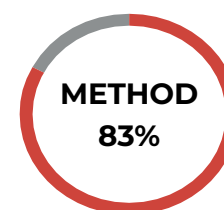
- Introduction to M&A and industry overview
- Simulation Activity: Start building a valuation model for a real-life case study. Explore company financials and create a three-statement model and WACC analysis
- Session review and leaderboards

## PERFORMANCE FEEDBACK

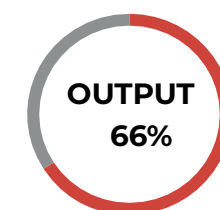
Our platform automatically grades financial models to arrive at composite scores based on speed, method and output.



The speed of submission is measured



Identifying hard coding and incorrect formulas used.



% of correct outputs, broken down by each tab in the challenge taken.

FY2 2023E	FY3 2024E	FY4 2025E	FY5 2026E	Feedback
4%	4%	4%	4%	
3.2	6,135.4	6,442.1	6,764.2	Well done!
0.2	4,294.8	4,509.5	4,735.0	Your output should be NEGATIVE, not positive
3.4	10,430.1	10,951.6	11,499.2	
0.0	3,129.0	3,285.5	3,449.8	Your output should be NEGATIVE, not positive
6.7	(2,086.0)	(2,190.3)	(2,299.8)	You multiplied row 8 by revenue, not gross profit
6.8	11,473.1	12,046.8	12,649.1	
6.2	35.9	35.6	35.4	
3.0	11,509.0	12,082.4	12,684.5	
5.0	(51.0)	(47.0)	(43.0)	Well done!
8.0	11,458.0	12,035.4	12,641.5	
7.0	(2,864.5)	(3,008.9)	(3,160.4)	Well done!
1.0	8,593.5	9,026.6	9,481.1	



Please write one sentence to reflect on your experience of the simulation

Answered: 9,026 Skipped: 0

It was very fun and engaging, and a great experience.

02/04/2024 20:03

Was a great experience, hands on felt what the roles are like and was a great session.

02/04/2024 19:23

REFRESHING! Finally a course that is practical and not just theory.

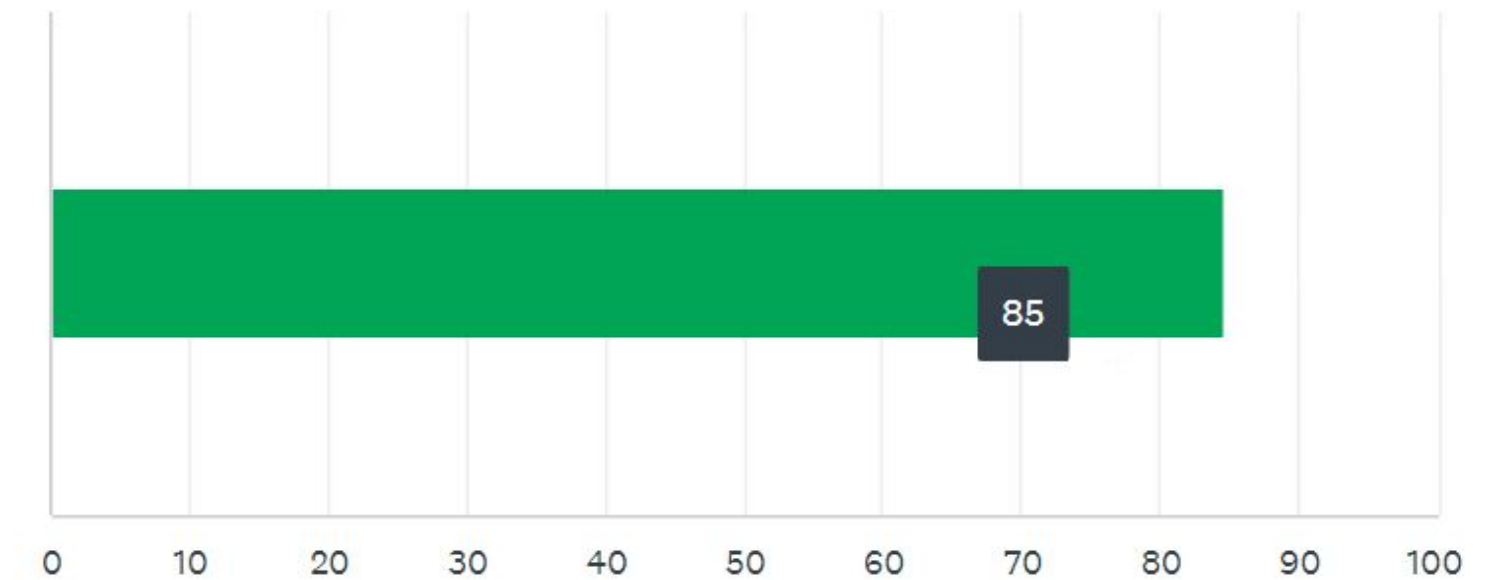
02/04/2024 19:09

Very fun and fast paced, I had to constantly think on my feet

02/04/2024 19:03

Please rate today's session

Answered: 9,026 Skipped: 0

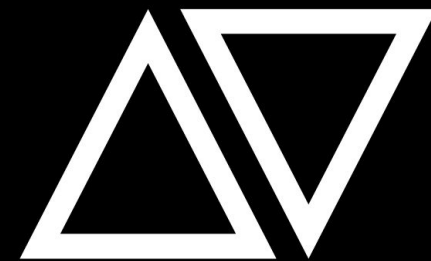


This data is the survey feedback from candidates who have taken our Finance Accelerator simulation.

This data is the survey feedback from candidates who have taken our M&A Finance Accelerator simulation.

[www.amplifyme.com](http://www.amplifyme.com)

---



---

[g.backhouse@amplifyme.com](mailto:g.backhouse@amplifyme.com)  
(+44) 754 1026 268  
18 St Swithin's Ln, London  
EC4N 8AD